



motoalliance

23001 Industrial Blvd, Rogers, MN 55374 / 1-866-527-7637
www.motoalliance.com

MOTOALLIANCE Wiper Kit

WP_098_single 12”

Universal 12” Wiper Kit

Thank you for purchasing our MotoAlliance Wiper Kit. You now own a premium Wiper Kit for use with your SxS. Please note the following instructions and heed all warnings.

Please verify that all hardware and parts are included in your package.

Item Number	Description	Quantity
1	Wiper Motor	1
2	Large White Plastic Washer	1
3	M10 Fender Washer	1
4	3/8" Hex Nut (fine thread)	1
5	Rubber Cap	1
6	Wiper Arm	1
7	Wiper Blade	1
8	M6 x 20mm Round Head Socket	1
9	Small White Plastic Washer	1
10	Wiring Harness (with fuse)	1
11	M6 Lock Washer	2
12	M6 Lock Nut	1

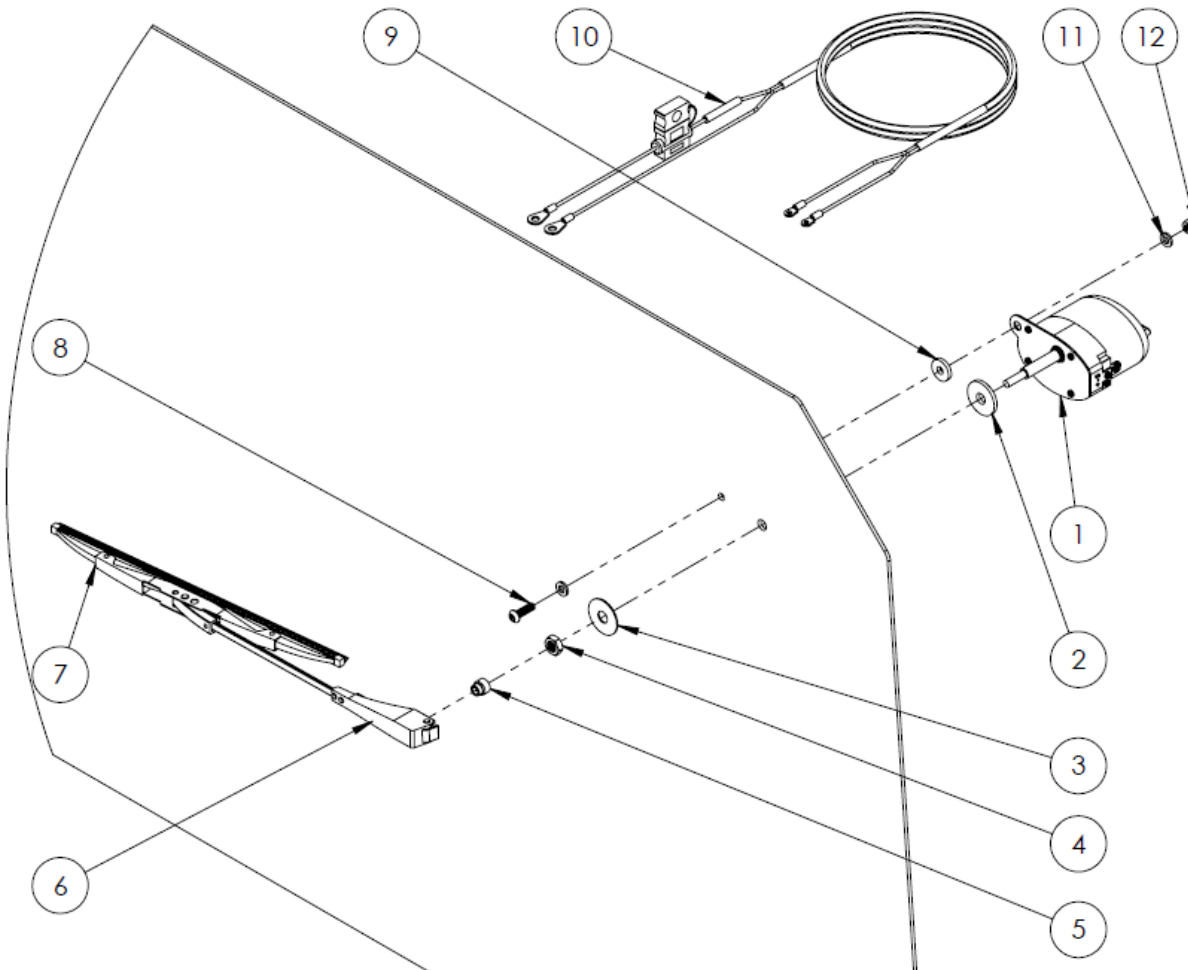


Figure 1

1. Identify a suitable location to mount the wiper assembly to the windshield. Make certain the motor location will allow for good wiper coverage and won't interfere with the vehicle frame or dash.
2. Using Template 1 as a guide drill a 3/8" hole and 1/4" hole where the wiper motor will be mounted. **Note: The wiper arm has an adjustable 90-degree sweep from the motor shaft and can be repositioned at any time.**
3. Install washers, bolts, nuts, rubber cap and motor as shown in Figure 1.

IMPORTANT NOTE: Do NOT exceed a max torque of 25-in/lbs when installing the nut on the brass shaft of wiper motor. Exceeding max torque may cause damage to the wiper motor and will not be covered under warranty.

4. Take the end of the wire harness with the smaller ring terminals and connect the red wire ring to the positive (+) terminal and the black wire ring to the negative (-) terminal on the wiper motor.
5. Take the opposite end of the wire harness and connect the red wire ring to the positive 12 Volt power terminal (+) and the black wire ring to the ground terminal (-) on the battery. **Note: Make sure the included 5-amp fuse is securely in place before turning the power on for the first time.**
6. Attach the wiper blade to the shaft and tighten the attachment bolt. If adjustment is required, loosen the attachment bolt, reposition the wiper arm, and then retighten the bolt.