

# RANGER CLUTCH AND ENGINE AIR INTAKE KIT PN 15-018 INSTALLATION

SVI, LLC

PART #: 15-018

MODEL: K- CLUTCH ENGINE INTAKE

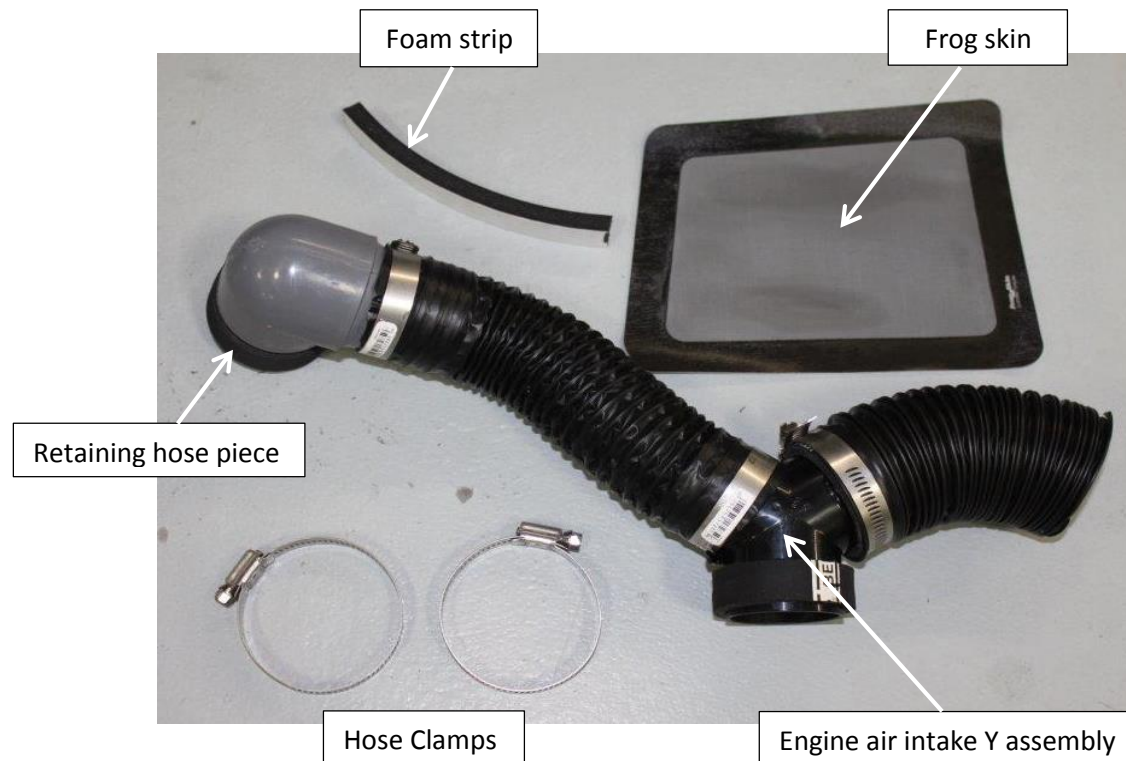
DESCRIPTION: MY13-16 RANGER 900 ALL MODELS MY15, 16 RANGER 570 ALL FULL SIZE MODELS

## KIT CONTENTS:

- 1 ENGINE AIR INTAKE Y ASSEMBLY
  - ELBOW WITH RETAINING HOSE PIECE
  - 2" FLEX HOSE WITH 2 HOSE CLAMPS
  - 2½" FLEX HOSE WITH 1 HOSE CLAMP
  - Y FITTING
- 2 ¾" X 6" FOAM STRIP WITH ADHESIVE BACK
- 3 QTY 2 HOSE CLAMPS
- 4 FROG SKIN
- 5 TAPE (NOT SHOWN)
- 6 INSTALLATION INSTRUCTIONS 15-018 (THESE INSTRUCTIONS)

## TOOLS NEEDED

- 1 PLIERS WITH JAWS FOR DART REMOVAL (IN RANGER TOOL KIT)
- 2 #40 TORX DRIVER
- 3 #20 TORX DRIVER
- 4 5/16" NUT DRIVER
- 5 2" HOLE SAW
- 6 3" HOLE SAW

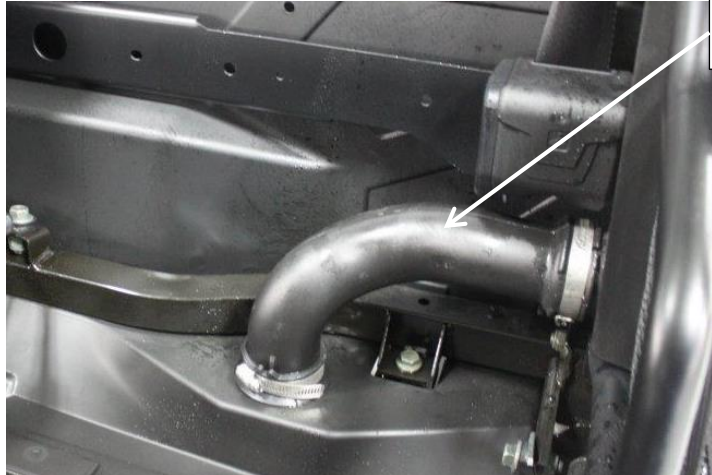


1.



Remove driver side seat/seat back or remove full seat back depending on model. On Crew – rear seat back.

2.



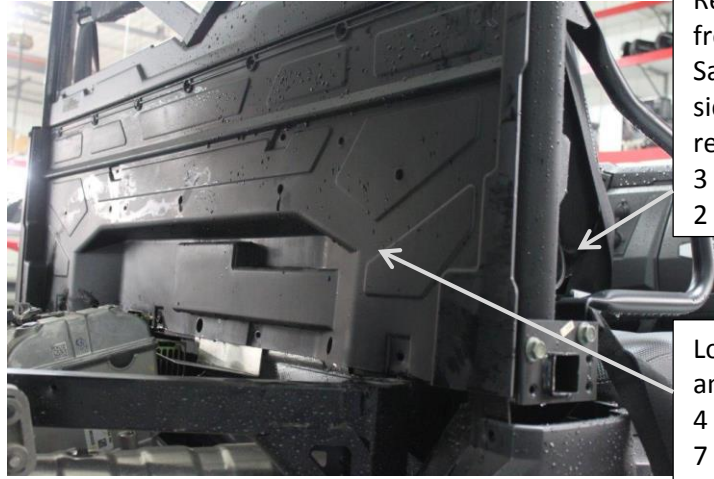
Remove engine air vent. Save clamps.

3.



Loosen clutch intake tube clamp. Leave clamp in place.

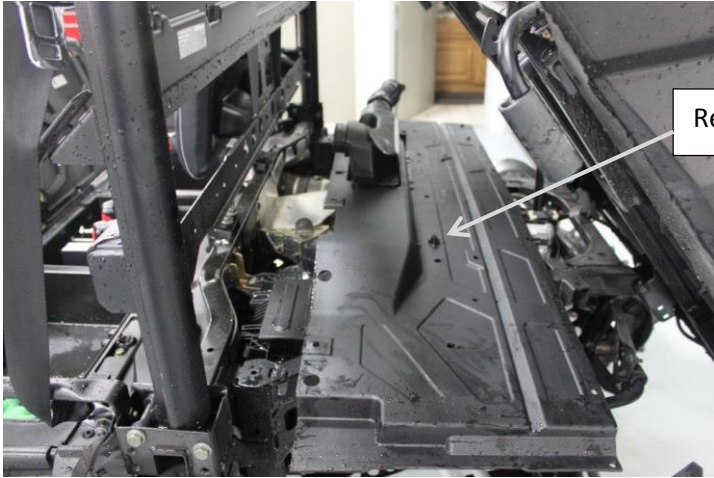
4.



Remove the outer air intakes from the B post - both sides. Save screws and darts. Right side shown with intake removed.  
3 #40 torx screws per side  
2 darts per side

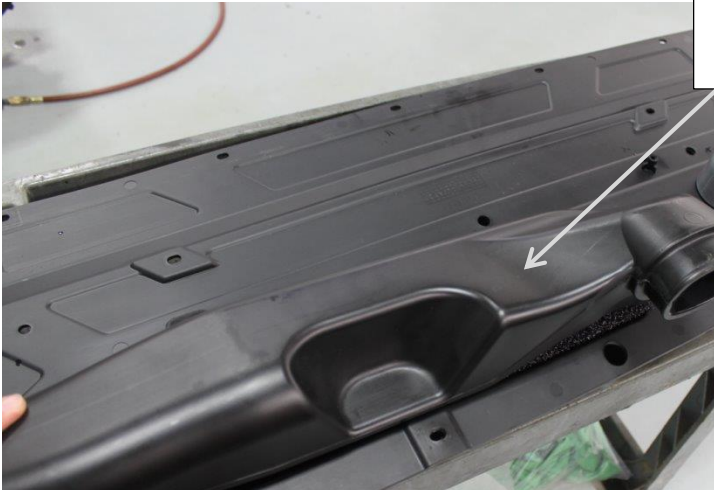
Loosen rear panel. Remove and save screws and darts.  
4 #40 torx screws  
7 darts.

5.



Remove rear panel.

6.



Remove clutch intake tube.  
2 #20 torx screws

7.

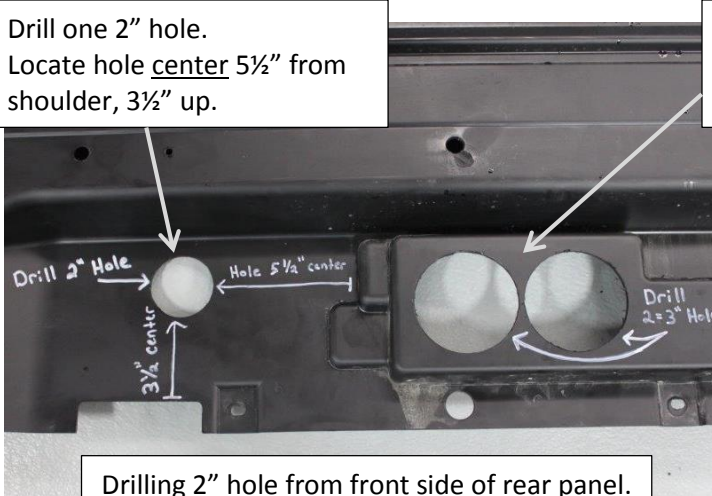


Drill a 3" hole centered on the rear side of clutch intake tube.

8.

Drill one 2" hole. Locate hole center 5½" from shoulder, 3½" up.

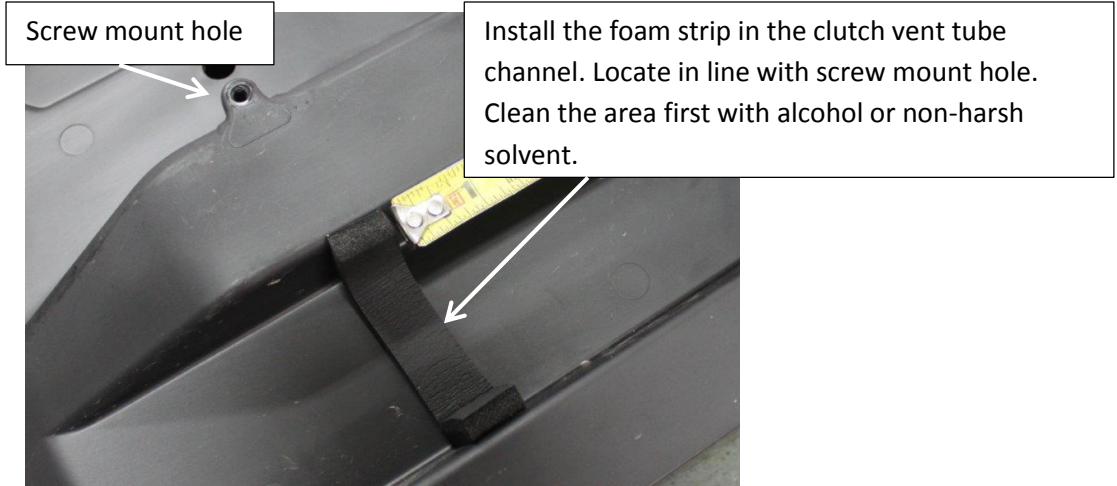
Drill two 3" holes centered on this flat area of the rear panel.



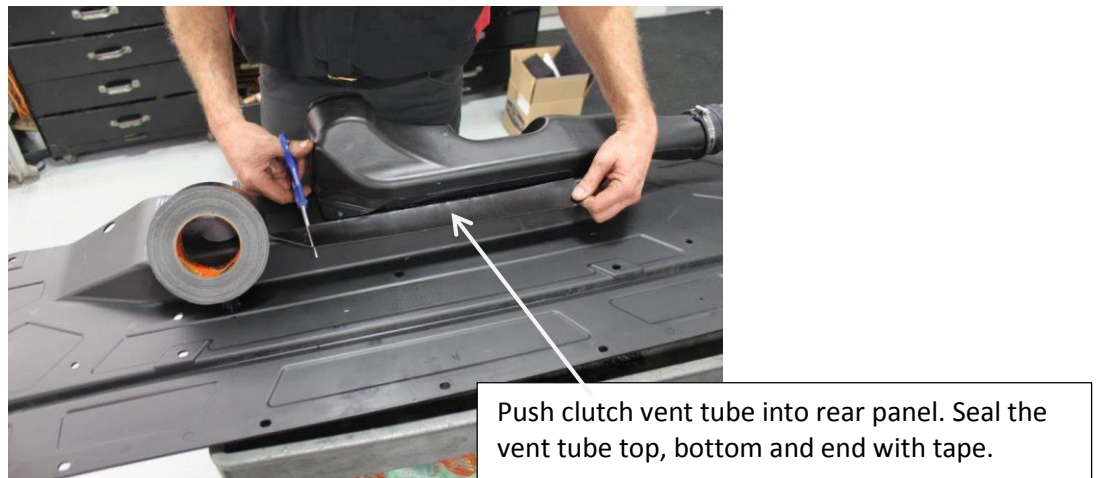
Drilling 2" hole from front side of rear panel.



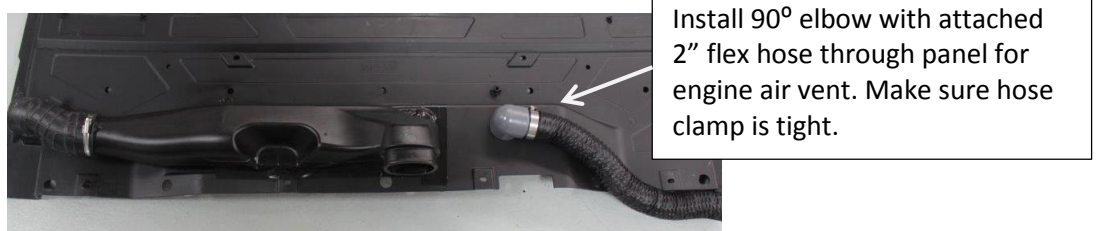
9.



10.



11.



Slip 2" by 3/4" long retaining hose piece over elbow on rear side of panel. Install hose clamp and tighten.

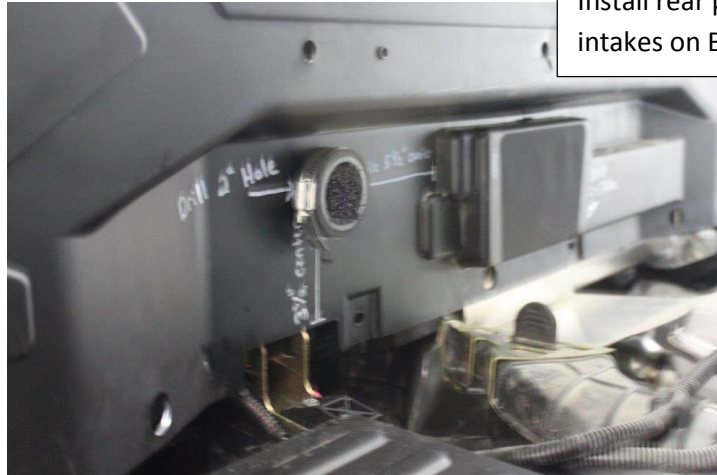
12.

Install frog skin over 3" holes on back side of rear panel.



13.

Install rear panel. Install both outer air intakes on B Posts.



14.

Attach clutch vent tube hose to outer air intake. Tighten both hose clamps.

Install Y fitting into engine intake fitting and tighten clamp.  
Attach 2" flex hose to Y fitting and tighten clamp.  
Attach 2½" flex hose to outer air intake and tighten hose clamp.

