



FEEL THE HEAT!

Revision No: 00
 Revision Date: 11-16-2018

Pursuit Doors

Part # **07-1803** Ranger XP 1000 4 Seater "New Body" (2019+) Black

Congratulations on your purchase of the DragonFire Pursuit Doors for the Ranger. The Ranger has long been a great ride for work and play so we have designed doors to fit both applications. With the updated body style, we have also redesigned our doors with the new style to match. Easy to use and install, these doors are off-road tough with tons of style! Stay Locked & Secured with DragonFire! Be sure to check out the full line of DragonFire Accessories for your Polaris Ranger vehicle at your local authorized dealer or online at <http://www.DragonFireRacing.com>

• **Does not fit with the Older Body Style Rangers.**



- Read and understand these instructions before installing product
- This product does not provide roll over protection or side protection
- Ensure doors are securely latched and locked prior to operating vehicle
- Do not use product if there are any signs of damage or fatigue

Disclaimer

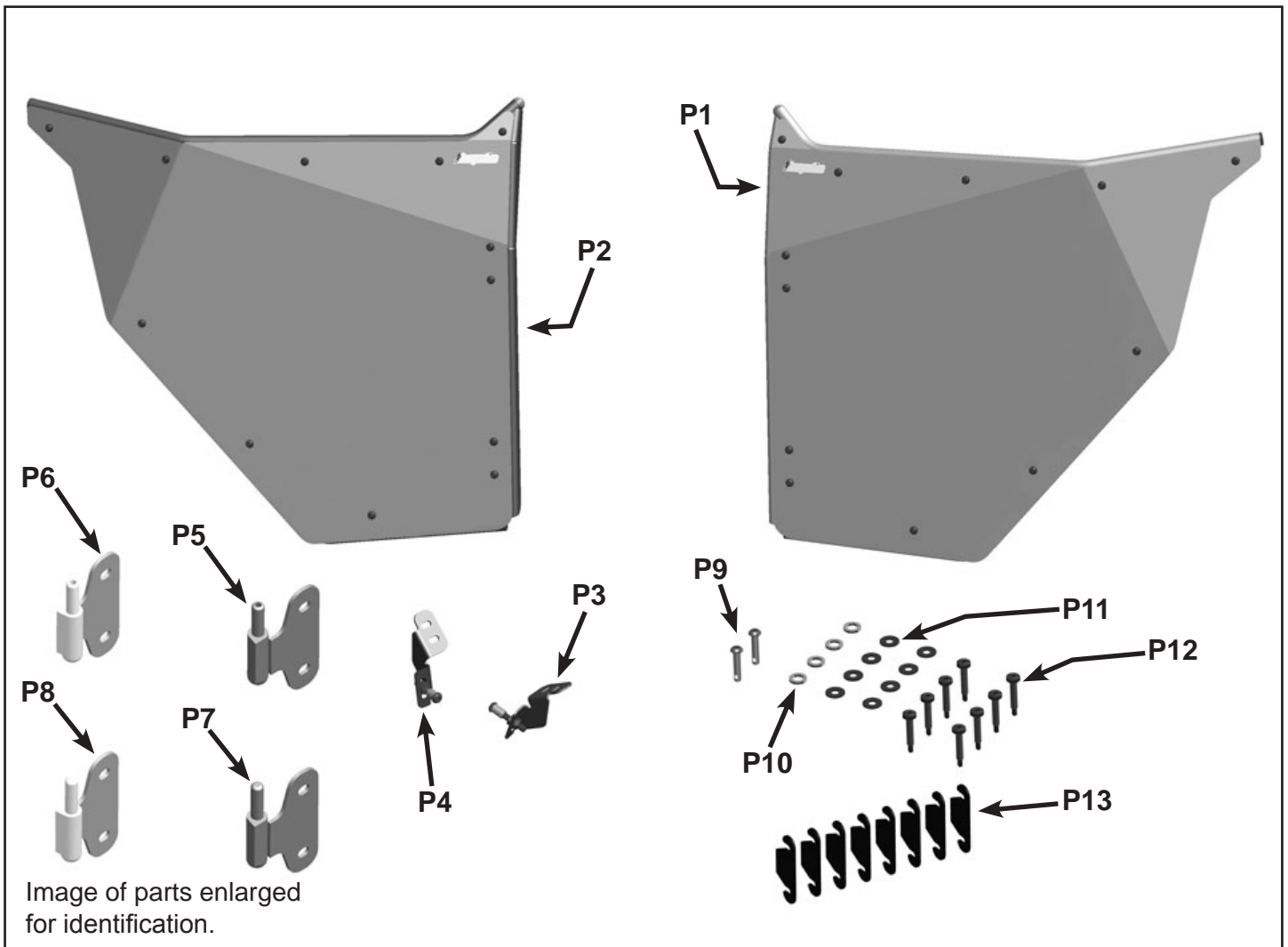
Off road activities can be hazardous and could lead to injury, dismemberment, paralysis and death. No warranty of representation is made as to the products ability to protect the user from any injury or death. The user assumes that risk. The acceptance and /or use of this merchandise purchased from DragonFire by the customer hereby shall release DragonFire from any and all liability pertaining to the use of such merchandise.

Tools Required
T40 Torx
#3 Phillips Screw Driver
#3 Phillips Driver Bit
13mm Wrench or Socket
14mm Wrenches or Socket
M4, M5 & M6 Hex Bit (Allen Wrench)
Ratchet
3/16" Drill Bit
Razor Knife or Snippers

Pre-installation: Lay out components and compare to list and images. Images may not portray the full detail or exact shape of the parts; however, they represent parts that have same or similar function.

Refer to DragonFire Racing Website for ensure that you have the latest revision of instructions & templates.

Part & Hardware List					
Front Doors Only (07-1800 Box)					
ITEM	QTY	SIZE	LENGTH	TYPE	STEP USED
P1	1	-	-	Door Assembly - Driver Side	12
P2	1	-	-	Door Assembly - Passenger Side	20
P3	1	-	-	Striker Assembly - Driver Side	5
P4	1	-	-	Striker Assembly - Passenger Side	
P5	1	-	-	Upper Hinge Bracket - Driver Side (Threaded)	11
P6	1	-	-	Upper Hinge Bracket - Passenger Side (Threaded)	
P7	1	-	-	Lower Hinge Bracket - Driver Side (Non-Threaded)	8
P8	1	-	-	Lower Hinge Bracket - Passenger Side (Non-Threaded)	
P9	2	1/4"-20	1-1/4"	Button Head Cap Screw	14
P10	4	.390" ID	-	Hinge Bushing .625 OD, (Brass Washer)	10
P11	8	1/4" ID	-	Flat Washer .688 OD, Black	8, 9, & 11
P12	8	1/4"-14	1-1/2"	Pan Head Self-Tapping Screw, Black	8, 9, & 11
P13	8	-	-	Shim	10 & 12



Following instructions for Front Doors only (07-1800 Box)

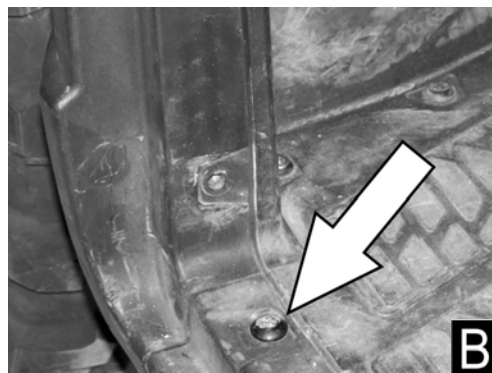
Step 1: Place vehicle on a flat and level surface. Place gear selector in "Park" and remove keys from the ignition.

Step 2 to 4 is for uninstalling the net and any hardware that might interfere with installation of the front doors.

Step 2: Uninstall hardware and brackets where shown at the front of the vehicle. Uninstall the bolt where shown at the top holding the net (Figure A). Reinstall and tighten the factory bolts at the top and where the plastic bucket was removed.

Step 3: Reinstall factory bolt at the bottom as shown in Figure B. The rest of the uninstalled hardware will not be reused.

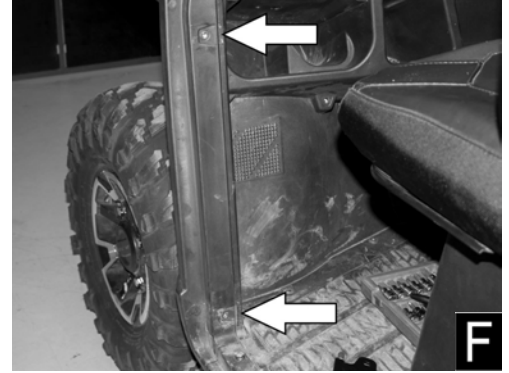
Step 4: Remove factory bolts at location shown and set aside to be reused (Figure C). Remove net; it will not be reused.



Step 5: Align the provided Striker Assembly - Driver Side [P3]. Loosely install the factory bolt removed in previous step as shown (Figure D).

Step 6: With the striker assembly pressed against plastic, install the second factory bolt and then hand-tighten both (Figure E).

Step 7: Uninstall the bolt at the top and ensure there is no bolt installed at the bottom hole shown by arrows (Figure F).



Step 8: Obtain Lower Hinge Bracket - Driver Side [P7], check part with image to ensure the part is correct before installing. Starting with the bottom hole, align the bottom slot of the hinge bracket to the hole and then loosely install the self-tapping screw [P12] with washer [P11]. Make sure to leave at least 1/2" between the plastic and the hinge bracket (Figure G).

Step 9: Align the hinge bracket and make sure it is vertically straight. Using the upper slot as a marker, drill a pilot hole with the 3/16" drill bit into the plastic and frame of vehicle. Using drill/impact with #3 Phillips bit, install the self-tapping screw [P12] with washer [P11] into the upper slot and pilot hole, but leave loose for adjustment (Figure H). **DO NOT** torque with drill/impact driver.

Step 10: Obtain 1 Shim [P13] and then place the shim between the plastic and the hinge bracket (Figure I). Push all the way in until it stops on backside of Hinge. Handtighten the 2 self-tapping screws until slightly loose and then install 1 Hinge Bushing [P10] onto the hinge pin.

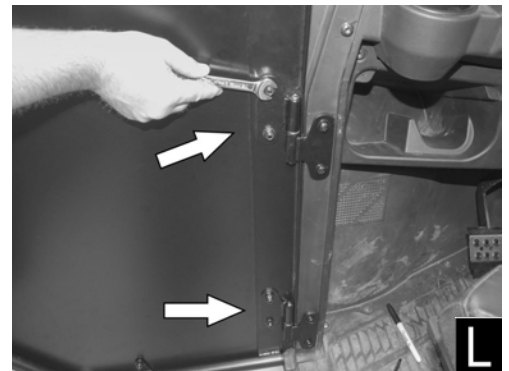
Note: The shim is use to adjust the fore and aft position of the door. Door can have 0 to 2 shims for adjustment.



Step 11: Align the upper slot of the Upper Hinge Bracket - Driver [P5] to the upper hole and then loosely install the self-tapping screw [P12] with washer [P11]. Make sure to leave 1/2" gap. When done, repeat Step 9 process for the bottom slot (Figure J).

Step 12: Repeat Step 10 for the Upper Hinge Bracket - Driver [P5] and then align the Door - Driver [P1] onto the hinge brackets (Figure K).

Note: If necessary, hinge brackets on the door can also be loosen for alignment (Figure L).

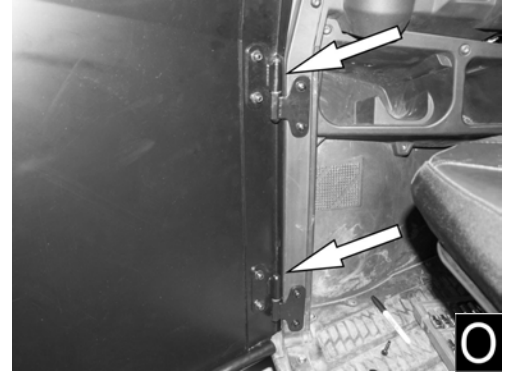
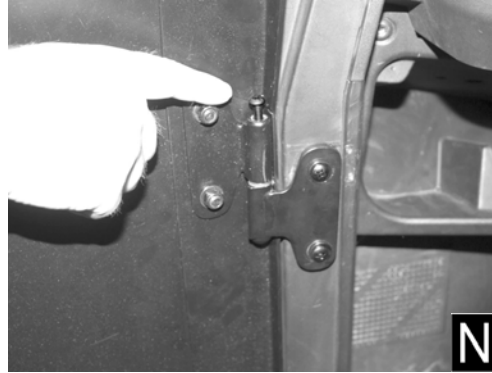


Step 13: Swing the door back and forth at approximately 45° so the hinge pins can fully align or sit into position and then tighten all hinge hardware. Ensure Shims are pushed all the way in when tightening. Door frame should hit backside of shim at full open.

Note: For the hinge brackets mounted to the vehicle, use the phillip head screw driver and tighten with one hand to avoid stripping out the screws (Figure M).

Step 14: Tighten the 1/4"-20 bolt [P9] to the upper hinge until stop and then loosen by a quarter to half a turn so the door can move freely (Figure N). If door does not move freely, adjust the tightness of the bolt until door can move freely from full open to fully closed.

Step 15: Slowly open the door and check for clearance with the plastic. Adjust hinge brackets installed to vehicle outward until the door just clears the plastic (Figure O). Tighten the hinge brackets per note in step 13.

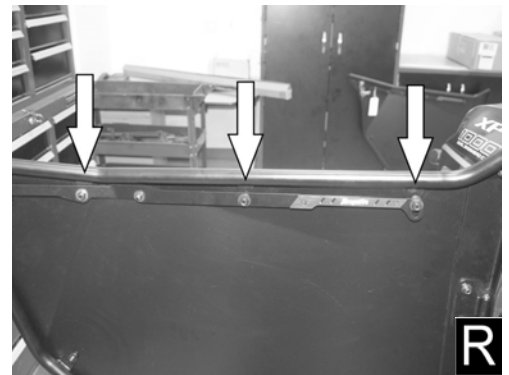
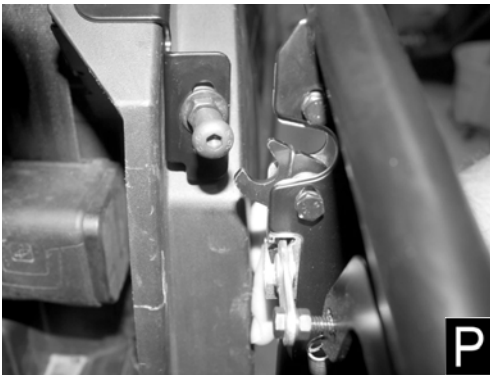


Step 16: Align the latch to the striker pin (Figure P). Striker pin can be adjusted both up/down and in/out for proper alignment. Ensure latch and striker pin are tightened after making the necessary adjustment.

Step 17: Close the door into position check for clearance and proper alignment with the plastic (Figure Q).

Step 18: When desired alignment has been reached and the door functions smoothly, tighten all hinge brackets and any other loose hardware.

Step 19: Adjust and tighten hardware shown by arrow in Figure R until handle is rattle free, but still operates smoothly.



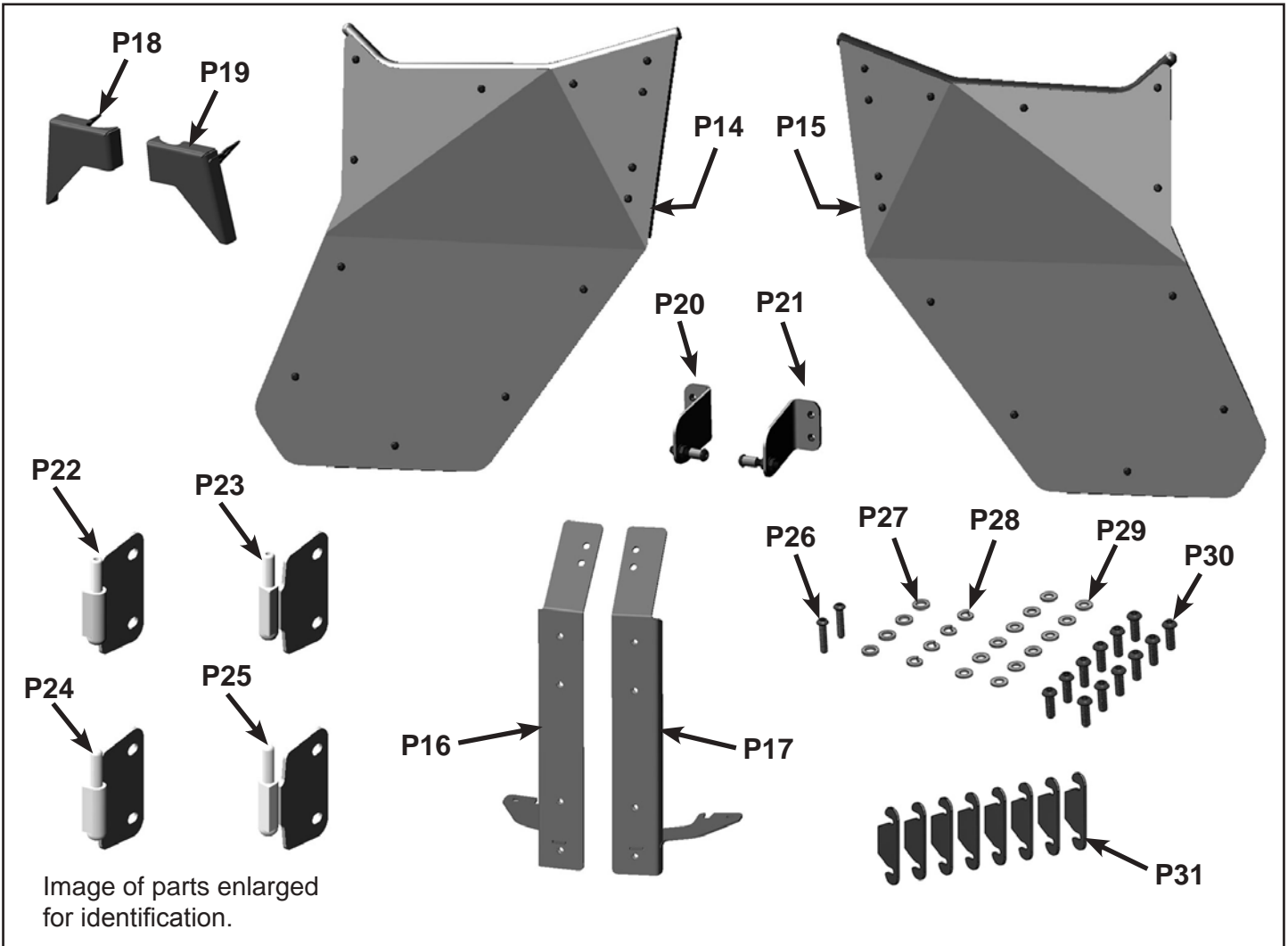
Step 20: Repeat instructions for Door Assembly - Passenger Side [P2] with the appropriate passenger side hardware (Figure S).

This completes the installation for the front doors.
Please proceed to the rear doors!



Part & Hardware List
Rear Doors Only (07-1803 Box)

ITEM	QTY	SIZE	LENGTH	TYPE	STEP USED
P14	1	-	-	Door Assembly - Driver Side	33
P15	1	-	-	Door Assembly - Passenger Side	40
P16	1	-	-	Hinge Mount Bracket - Driver Side	
P17	1	-	-	Hinge Mount Bracket - Passenger Side	40
P18	1	-	-	Filler Panel - Drive Side	
P19	1	-	-	Filler Panel - Passenger Side	
P20	1	-	-	Striker Assembly - Driver Side	25
P21	1	-	-	Striker Assembly - Passenger Side	
P22	1	-	-	Upper Hinge Bracket - Driver Side (Threaded)	31
P23	1	-	-	Upper Hinge Bracket - Passenger Side (Threaded)	
P24	1	-	-	Lower Hinge Bracket - Driver Side (Non-Threaded)	33
P25	1	-	-	Lower Hinge Bracket - Passenger Side (Non-Threaded)	
P26	2	1/4"-20	1-1/4"	Button Head Cap Screw, Black	35
P27	4	.390" ID	-	Hinge Bushing .625 OD, (Brass Washer)	32
P28	8	M8	-	Lock Washer, Split, Black	24 & 25
P29	12	M8	-	Flat Washer, Black	24, 25 & 31
P30	12	M8	25mm	Button Head Cap Screw, Black	24, 25 & 31
P31	8	-	-	Shim	32 & 33



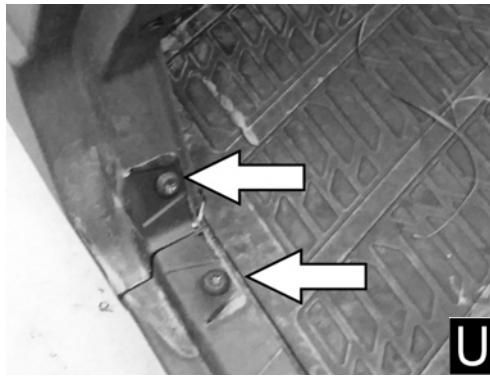
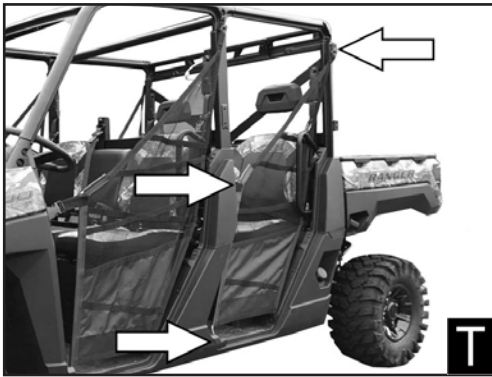
Following instructions for Rear Doors only (07-1803 Box)

Step 21 to 24 is for uninstalling the net and any hardware that might interfere with installation of the rear doors (this may include the shoulder bar).

Step 21: Uninstall net hardware, buckles and brackets where shown at the front area of rear door section of the vehicle (Figure T). Uninstall the bolt at the top where shown holding the net (Figure T). Reinstall and tighten top bolt.

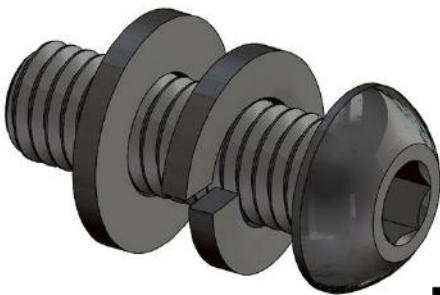
Step 22: Reinstall factory bolts at the bottom as shown (Figure U). The rest of the uninstalled hardware will not be reused.

Step 23: Remove factory Torx head bolts (2x) at location shown and set aside to be reused (Figure V). Remove lower bolt for shoulder bar. Remove rear net & bar; they will not be reused.

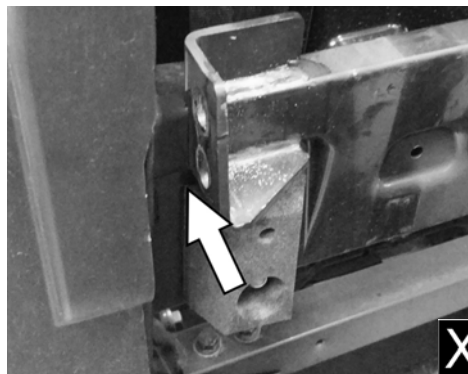


Step 24: Obtain and assemble in the following order: one M8 Bolt [P30], one M8 Lock Washer [P28] and one M8 Flat Washer [P29] (Figure W).

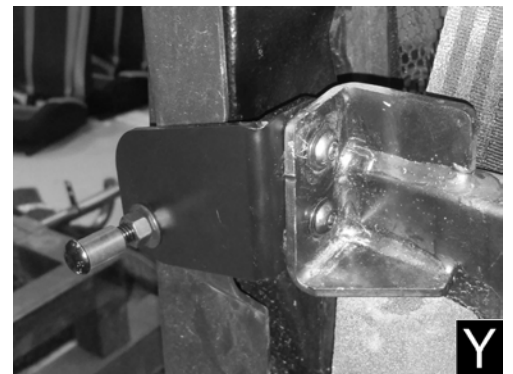
Step 25: Obtain Striker Assembly - Driver Side [P20] and locate to front buckle frame mount in area indicated (Figure X). Attach with Bolt assembly per Step 24, positioning bolt in center of slot and loosely tighten. With the striker in place, install a second bolt assembly per Step 24 and then tighten both bolts (you may have to adjust later when aligning door) (Figure Y).



W



X

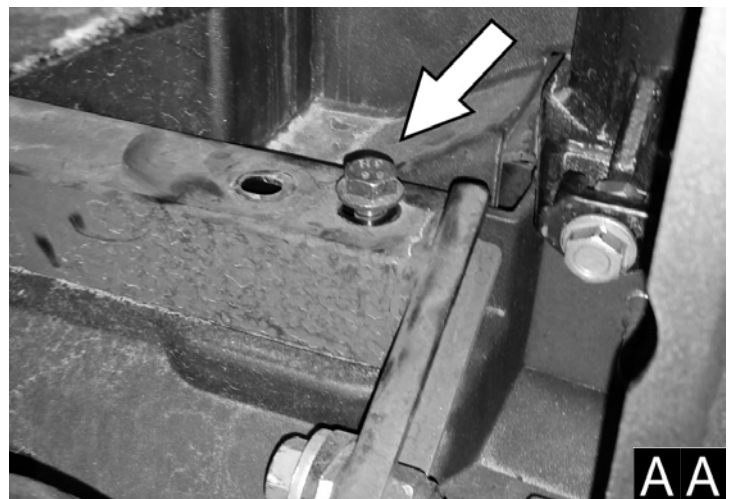


Y

Step 26: Locate 2 lower factory bolts behind seat near lower seat belt attachment point (Figure Z). Remove inner bolt and retain for later use. Loosen outer bolt approximately 1/2" (Figure AA)



Z



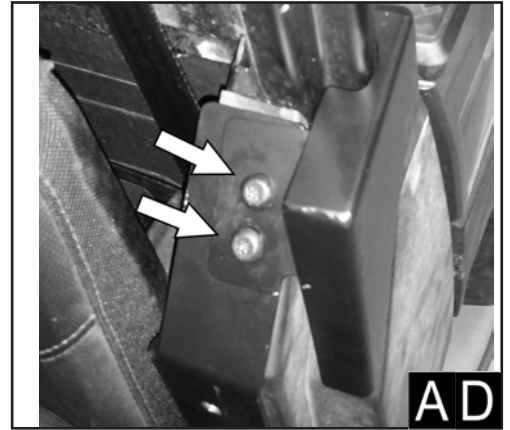
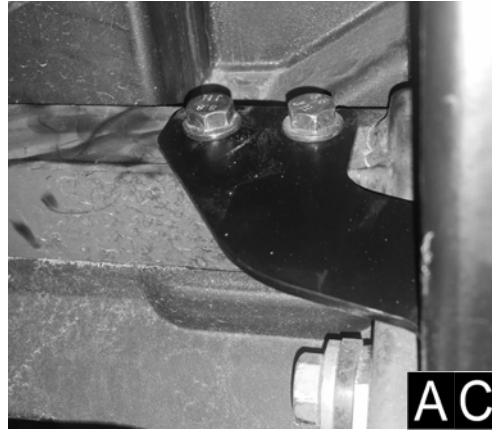
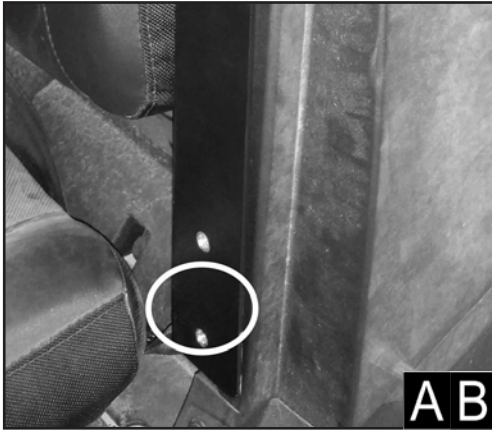
AA

Step 27: Obtain Hinge Mount Bracket - Driver Side [P16]. Slide bottom slot of mount bracket flange onto outer bolt that was loosened in Step 26 as indicated (Figure AA)

Step 28: Swing Hinge Mount Bracket - Driver Side [P14] outwards until backside of Hinge Mount Bracket mount flange touches on plastic of vehicle. Mark where bracket hits plastics in indicated area (Figure AB) and using a razor knife or snips, carefully trim plastics to clear backside of Hinge Mount Bracket.

Step 29: Position Hinge Mount Bracket so bottom hole and slot line up with lower factory bolt & hole and top holes line up with 2 holes where you removed factory bolts in Step 23. Replace lower inside bolt removed in Step 26 and lightly tighten both lower bolts (Figure AC).

Step 30: Obtain Filler Panel - Driver Side [P18] and position it over top holes of Hinge Mount Bracket. Obtain 2 factory Torx head bolts removed in Step 23 and loosely install thru both Filler Panel & Hinge Mount Bracket. Align Filler Panel so it lines up with factory cage and plastics and fully tighten both upper factory bolts (Figure AD). Now fully tighten lower 2 bolts (Figure AC).



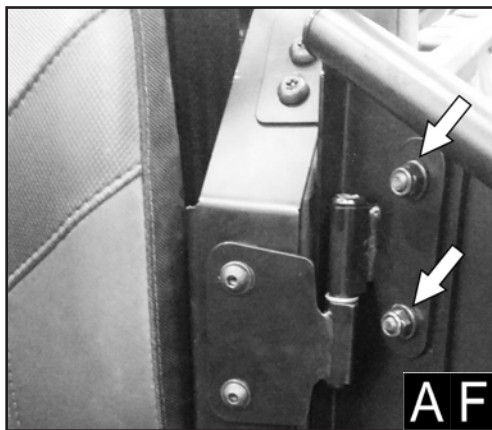
Step 31: Obtain Upper Hinge Bracket - Driver Side (threaded) [P22] and check part with image to ensure the part is correct before installing. Starting with the bottom hole, loosely install with one M8 Button Head Cap Screw [P30] and one M8 washer [P29]. Repeat for top hole.

Step 32: Obtain 1 Shim [P31] and then place the shim between the Hinge Mount Bracket and the Hinge Bracket (Figure AE). Push all the way in until it stops on backside of Hinge. Align the Hinge Bracket with Hinge Mount Bracket making sure it is vertically straight and tighten both bolts until only slightly tight. Install 1 Hinge Bushing [P27] onto the hinge pin.

Note: The shim is use to adjust the fore and aft position of the door. Door can have 0 to 2 shims for adjustment.

Step 33: Repeat Step 32 for the Lower Hinge Bracket - Driver (Non Threaded) [P24] and then align the Door - Driver [P14] onto the hinge brackets (Figure AG).

Note: If necessary, hinge brackets on the door can also be loosen for alignment (Figure AF).



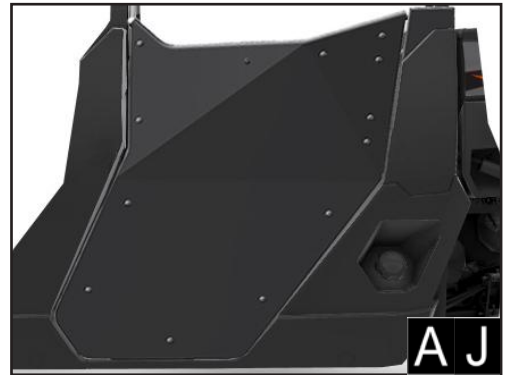
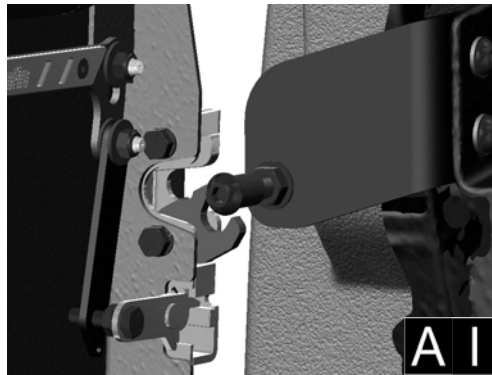
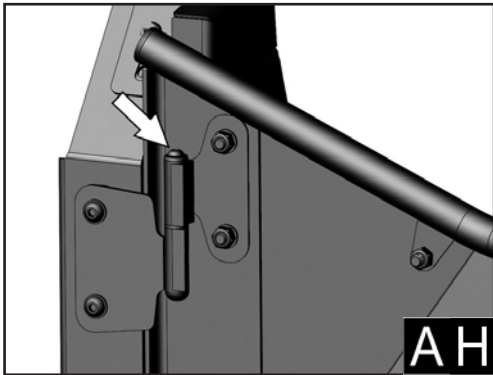
Step 34: Swing the door back and forth at approximately 45° so the hinge pins can fully align or sit into position and then tighten all hinge hardware. Ensure Shims are pushed all the way in when tightening. Door frame should hit backside of shim at full open.

Step 35: Install and tighten the 1/4"-20 bolt [P26] to the upper hinge until stop and then loosen by a quarter to half a turn so the door can move freely (Figure AH). If door does not move freely, adjust the tightness of the bolt until door can move freely from full open to fully closed.

Step 36: Align the latch to the striker pin (Figure AI). Striker pin can be adjusted both up/down and in/out for proper alignment. Ensure latch and striker pin are tightened after making the necessary adjustment.

Step 37: Close the door into position and check for clearance and proper alignment with the plastic (Figure AJ).

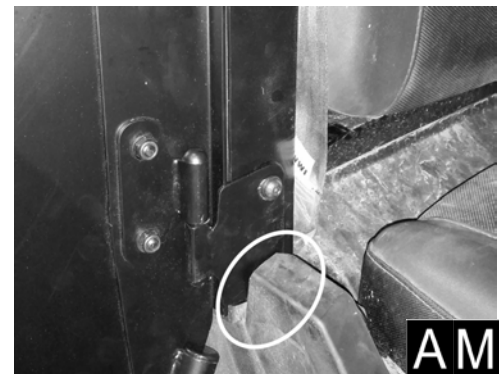
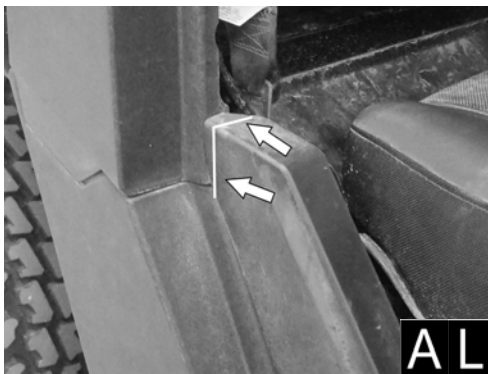
Step 38: When desired alignment has been reached and the door functions smoothly, tighten all hinge brackets and any other loose hardware.



Step 39: Adjust and tighten hardware shown by arrows in Figure AK until handle is rattle free, but still operates smoothly.

Step 40: Repeat instructions for Door Assembly - Passenger Side [P15] with the appropriate passenger side hardware.

Note: For Passenger Side installation, the lower side cover panel plastic will also need to be removed and trimmed in area indicated (Figure AL) to clear Hinge Mount Bracket - Passenger Side [P17] (approximately 1/2" to 1"). Re-attach trimmed side cover panel once Hinge Mount Bracket is installed (Figure AM)



Step 41: This completes installation. Time to ride and enjoy!

ProTip: Periodically check all hardware and re-tighten if needed.

For further assistance please contact us at customerservice@dragonfireracing.com or 1-800-708-9803.

